

FOR SALE

WIRTGEN 4200 SURFACE MINER



Make	Wirtgen
Model	4200SM
Year	2014
Serial:	03.35.0032
GSM Asset/ID #	GSM400
Engine Type	Cummins KTA50
Machine hours:	11,903
Drum Type	HT14 coal drum
Machine configuration	Conveyor mode
Machine Location	Dalby, Queensland Australia

- Assistance with shipping arrangements available
- Inspections welcome
- Various 2500SM & 4200SM spare parts also available

Contact: Global Civil and Mining
 +61 8 92583900 info@globalsm.com.au

COMPONENT	HOURS
Engine	11,903
Radiator	11,903
Splitter box	3,796
Drum Drive Fluid Clutch	3,796
Pump Drive Coupling	3,796
Pos 1 Crawler	11,903
Pos 2 Crawler	11,903
Pos 3 Crawler	11,903
Pos 4 Crawler	11,903
Milling Drum Housing	11,903
Milling Drum HT14 or HT15	11,903
Pump - Q1	3,796
Pump - Q2	3,796
Pump - Q3	3,796
Pump - Q4	3,796
Pump - Q5	1,522
Pump - Q6	1,522
Pump - Q7 & Q12	3,796
Pump - Q8 & Q10	3,796
Pump - Q9 & Q11	4,404
Pos 1 Steer Cylinder	11,903
Pos 2 Steer Cylinder	11,903
Pos 3 Steer Cylinder	11,903
Pos 4 Steer Cylinder	11,903
Pos 1 Inner Height Cylinder	11,903
Pos 1 Outer Height Cylinder	11,903
Pos 2 Inner Height Cylinder	11,903
Pos 2 Outer Height Cylinder	11,903
Pos 3 Inner Height Cylinder	11,903
Pos 3 Outer Height Cylinder	11,903
Pos 4 Inner Height Cylinder	7,537
Pos 4 Outer Height Cylinder	11,903
Turbo L/H (Midlife)	3,796
Turbo R/H (Midlife)	3,796
Engine Water Pump (Midlife)	3,796
Engine Injectors (Midlife)	3,796
Starter Motors	3,796
Alternator	3,209
Air conditioning service	69
Hydraulic Cooler	11,903
Cab Changeout	11,903
Midlife Service	3,796

FOR SALE: WIRTGEN 4200SM

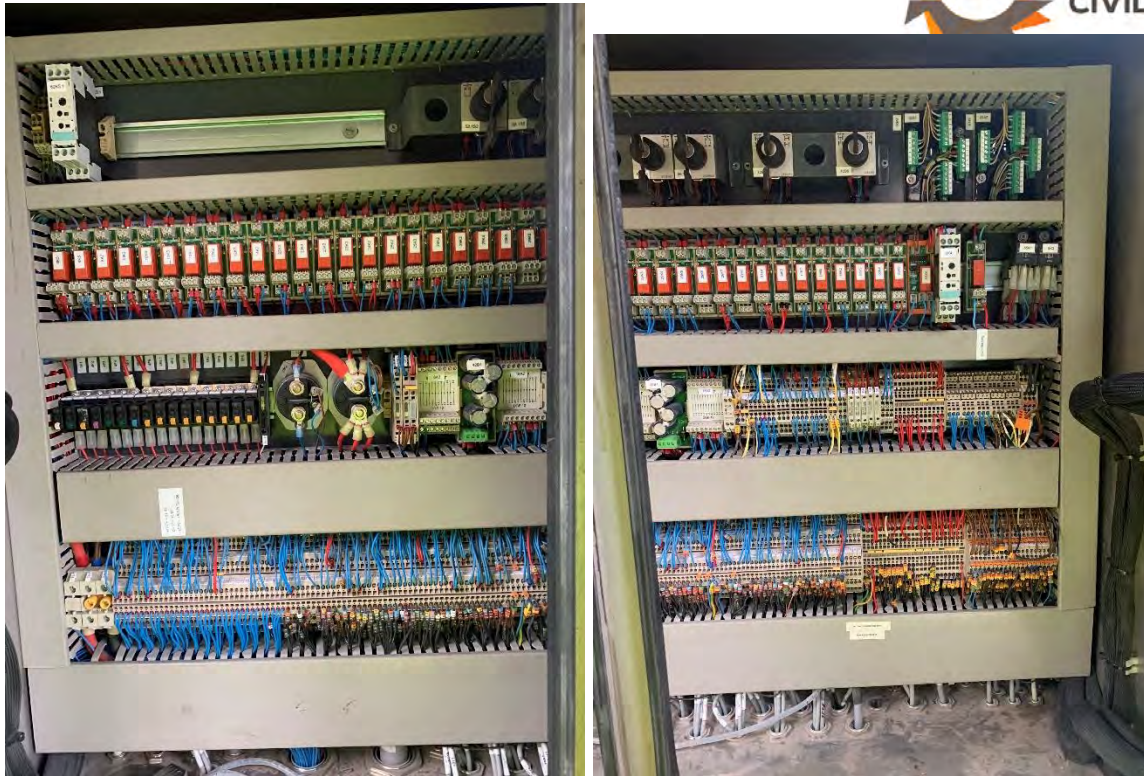




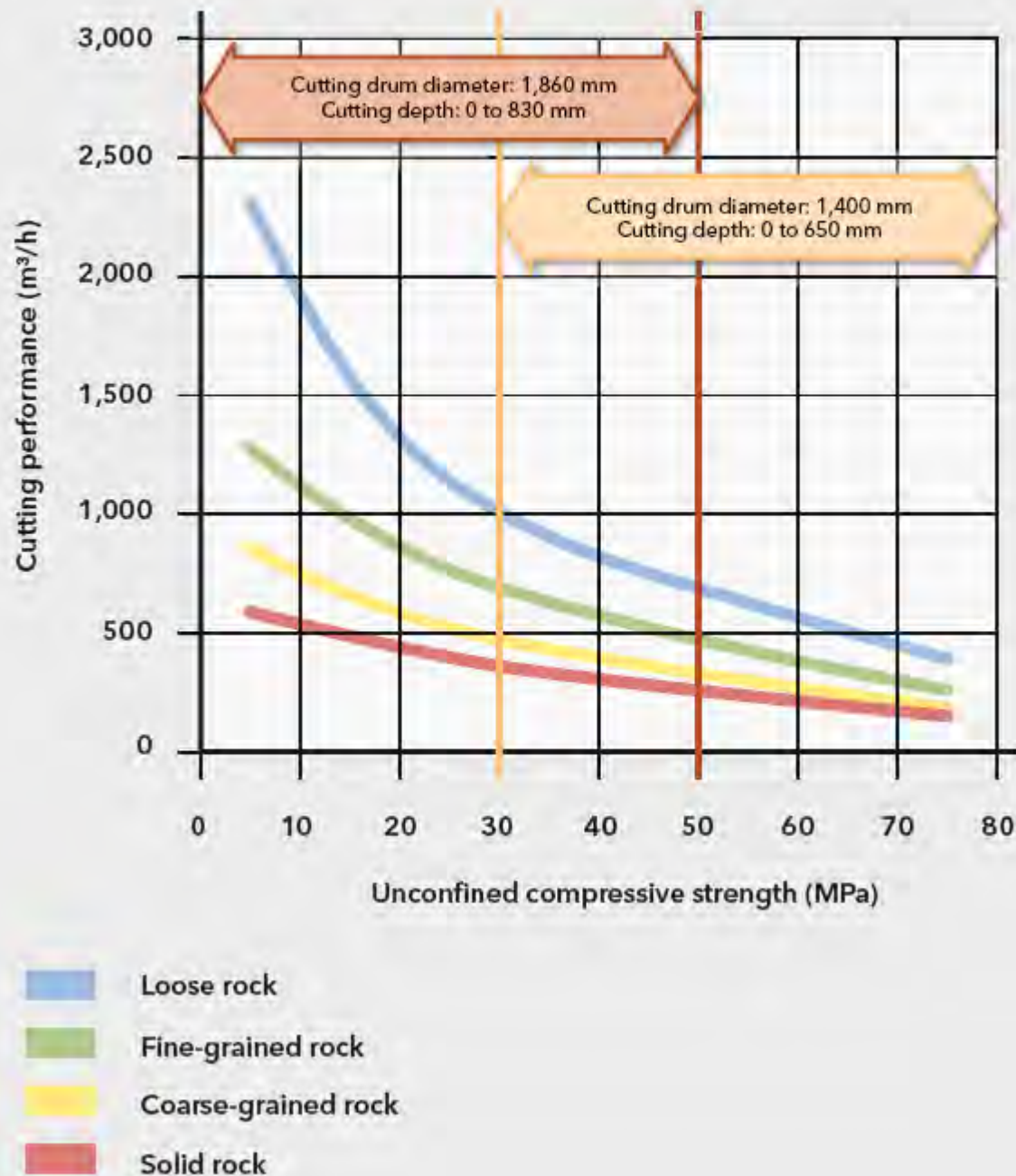








CUTTING PERFORMANCE OF THE WIRTGEN 4200 SM SURFACE MINER



	4200 SM for hard rock	4200 SM for soft rock
Cutting drum		
Cutting width max.	4,200 mm	4,200 mm
Cutting depth*1	0-650 mm	0-830 mm
Drum diameter with tools	1,500 mm	1,860 mm
Number of cutting tools	depending on operating conditions	
Engine		
Manufacturer	CUMMINS	
Type	KTA 50	
Cooling	water	
Number of cylinders	16	
Rated power	1,194 KW/1,600 HP/1,623 PS	
Fuel consumption, full load	284 l/h	
Fuel consumption in field operation	142 l/h	
Emission standard A (USA/ Canada)	Tier 2	
Emission standard B (outside USA/Canada)	Tier 0	
Electrical system		
Electrical power supply	24 V	
Tank capacities		
Fuel tank	2,900 l	
Hydraulic oil tank	800 l	
Water tank	10,000 l	
Driving properties		
Operating speed	0-20 m/ min	
Travel speed	0-2.5 km/ h	
Theoretical gradeability	20%	
Max. cross slope	8%	
Crawler units		
Crawler units (L x W x H)	3,912 x 600 x 1,271 mm	
Conveyor system		
Belt width of primary conveyor	1,800 mm	
Length of primary conveyor	7,000 mm	
Belt width of discharge conveyor	1,800 mm	
Length of discharge conveyor	16,000 mm	

^{*1} – The maximum cutting depth may deviate from the value indicated due to tolerances and wear

	4200 SM for hard rock	4200 SM for soft rock
Shipping dimensions		
Basic machine dismantled for transport (L x W x H)	17,140 x 5,430 x 4,100 mm	
Discharge conveyor (L x W x H)	17,650 x 3,080 x 2,020 mm	
Cutting drum unit including cutting drum, drum diameter with tools 1,500 mm (L x W x H)	5,550 x 3,300 x 2,400 mm	
Cutting drum unit including cutting drum, drum diameter with tools 1,860 mm (L x W x H)	5,550 x 3,300 x 2,580 mm	
Conveyor slewing device including counterweight	5,700 x 3,550 x 2,100 mm	
Open-top shipping container, 40' (L x W x H)	12,190 x 2,430 x 2,590 mm	

	4200 SM for hard rock	4200 SM for soft rock
Machine weights		
Empty weight	195,000 kg	198,000 kg
Operating weight, CE *2	201,300 kg	204,300 kg
Maximum operating weight, full tanks	208,300 kg	211,300 kg
Transport weights of individual components		
Basic machine dismantled for transport	142,000 kg	
Cutting drum unit including cutting drum, drum diameter with tools 1,500 mm	approx. 34,000 kg*3	
Cutting drum unit including cutting drum, drum diameter with tools 1,860 mm	approx. 32,800 kg*3	
Discharge conveyor, 16,000 mm long	9,600 kg	
Conveyor slewing device including counterweight	26,300 kg	
Two tool containers, 20'	depending on scope of delivery	
Weights of operating agents		
Water tank filling in kg	10,000 kg	
Diesel tank filling in kg (0.83 kg /l)	2,400 kg	
Optional equipment features increasing/reducing empty weight		
Driver	75 kg	
On-board tools	30 kg	

^{*2} – Weight of machine, half-full water tank, half-full fuel tank, driver, on-board tools, excluding equipment options

^{*3} – Weights depend on type of cutting drum installed in machine