

# FOR SALE

## WIRTGEN 2500 SURFACE MINER



<b>Make</b>	Wirtgen
<b>Model</b>	2500SM
<b>Year</b>	2010
<b>Serial:</b>	06.26.0047
<b>GSM Asset/ID #</b>	GSM405
<b>Engine Type</b>	Cummins QST 30
<b>Engine hours:</b>	5761
<b>Drum Type</b>	HT15
<b>Drum hours</b>	0
<b>Machine configuration</b>	Windrow
<b>Machine Location</b>	Singleton, NSW

- Assistance with shipping arrangements available
- Inspections welcome
- Various 2500SM & 4200SM spare parts also available

**Contact:** Global Civil and Mining  
 +61 8 92583900    [info@globalsm.com.au](mailto:info@globalsm.com.au)

<b>COMPONENT</b>	<b>HOURS</b>
Engine	5761
Radiator	5761
Splitter box	605 (Rebuilt)
Drum Drive Clutch	24 (Rebuilt)
Pump Drive Coupling	605 (Rebuilt)
Pos 1 Crawler	5761
Pos 2 Crawler	5761
Pos 3 Crawler	5761
Pos 4 Crawler	5761
Milling Drum Housing	5761
Milling Drum HT15	0 (Rebuilt)
Milling Drum Gearbox	0 (Rebuilt)
Pump - Q1 (Advance Drive Pump)	5761
Pump - Q2 (Advance Drive Pump)	5761
Pump - Q5 (Control Oil Pump)	5761
Pump - Q6 (Control Oil Pump)	5761
Pump - Q7 & Q12 (Tandem Pump)	605
Pump - Q8 & Q10 (Tandem Pump)	5761
Pump - Q9 & Q11 (Tandem Pump)	5761
Pos 1 Steer Cylinder	5761
Pos 2 Steer Cylinder	5761
Pos 3 Steer Cylinder	5761
Pos 4 Steer Cylinder	5761
Pos 1 Inner Height Cylinder	5761
Pos 1 Outer Height Cylinder	5761
Pos 2 Inner Height Cylinder	5761
Pos 2 Outer Height Cylinder	5761
Pos 3 Inner Height Cylinder	5761
Pos 3 Outer Height Cylinder	5761
Pos 4 Inner Height Cylinder	605
Pos 4 Outer Height Cylinder	605
Turbo L/H (Midlife)	5761
Turbo R/H (Midlife)	5761
Engine Water Pump (Midlife)	5761
Engine Injectors (Midlife)	5761
Starter Motors	5761
Alternator	5761
Air conditioning service	5761
Hydraulic Cooler	5761
Cab Changeout	5761
Drum belt Tensioner	5761
Midlife rebuild	5761
Valve Set	417



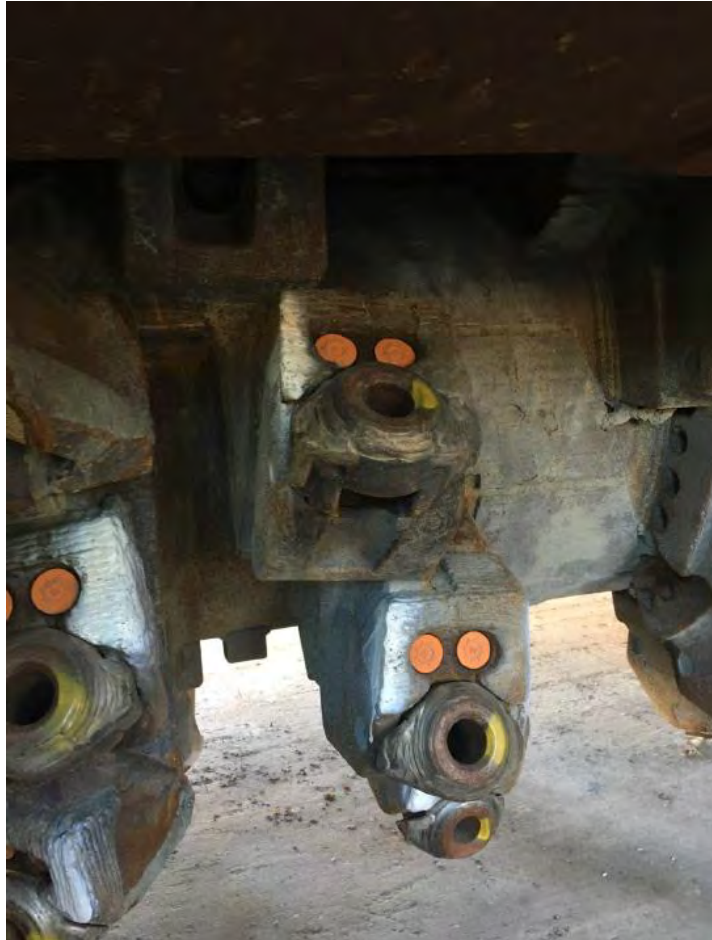












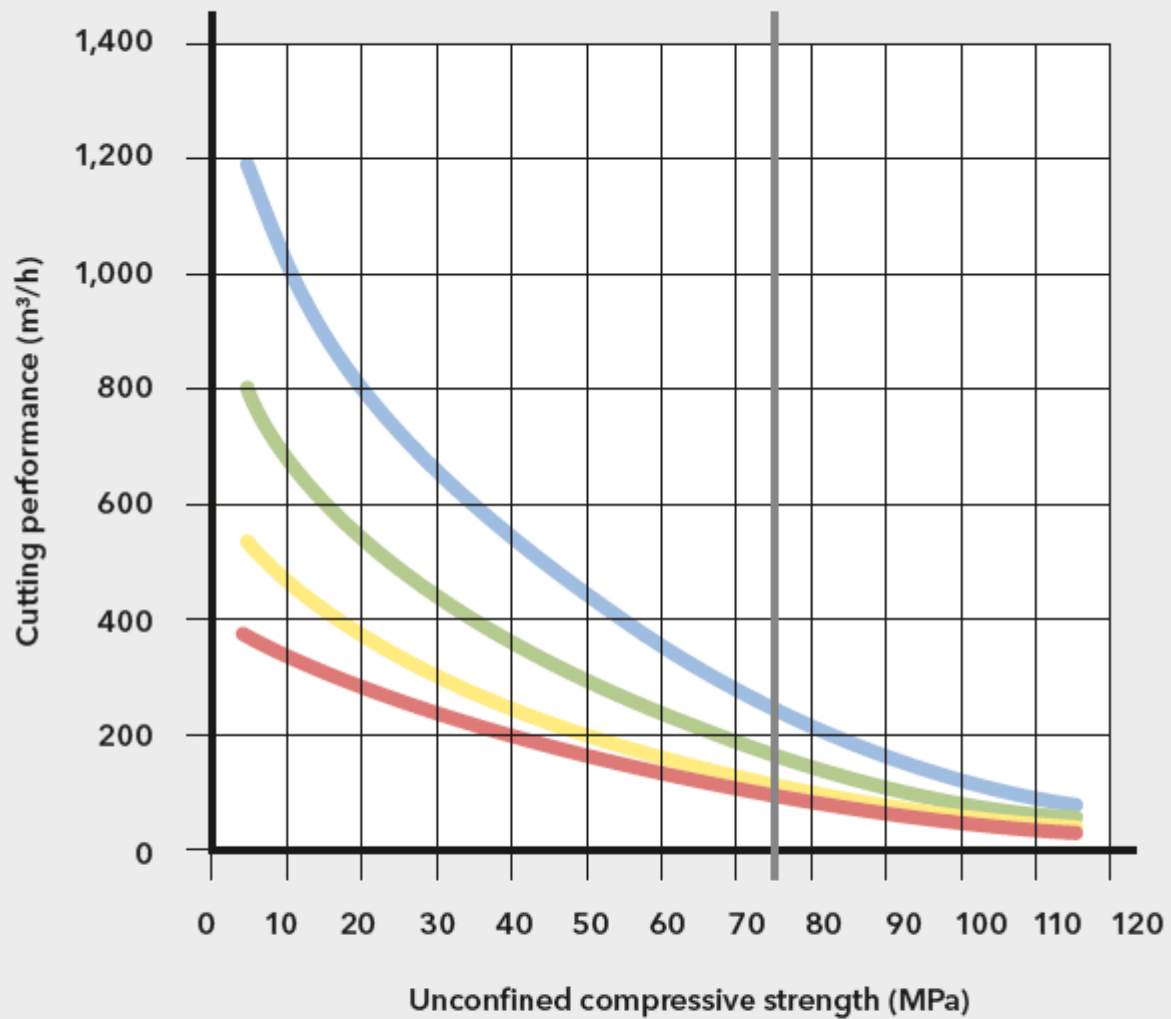








## CUTTING PERFORMANCE OF THE WIRTGEN 2500 SM SURFACE MINER



- Loose rock
- Fine-grained rock
- Coarse-grained rock
- Solid rock



Cutting drum	
Cutting width max.	2,500 mm
Cutting depth* <sup>1</sup>	0 to 650 mm
Drum diameter with tools	1,500 mm
Number of cutting tools	depending on operating conditions
Engine	
Manufacturer	CUMMINS
Type	QST 30
Cooling	water
Number of cylinders	12
Rated power	783 kW/1,050 HP/1,065 PS
Fuel consumption, full load	192 l/h
Fuel consumption in field operation	96 l/h
Emission standard USA / Canada	Tier 2
Emission standard outside USA / Canada	Tier 1
Electrical system	
Electrical power supply	24 V
Tank capacities	
Fuel tank	2,400 l
Hydraulic oil tank	500 l
Water tank	2,800 l
Driving properties	
Operating speed	0 to 25 m/min
Travel speed	0 to 3.9 km/h
Theoretical gradeability	20%
Max. cross slope	8%
Crawler units	
Crawler units front and rear (L x W x H)	2,920 x 400 x 970 mm
Conveyor system	
Belt width of primary conveyor	1,400 mm
Length of primary conveyor	5,800 mm
Belt width of discharge conveyor	1,400 mm
Length of discharge conveyor	11,300 mm

\*<sup>1</sup> – The maximum cutting depth may deviate from the value indicated due to tolerances and wear

Shipping dimensions	
Ground transport	
Packing unit No. 1: module 1 (machine frame, Crawlwe units, engine station, primary conveyor, operator's cabin) (L x W x H)	12,800 x 3,470 x 3,400 mm
Packing unit No. 2: module 2 (slewing ring, conveyor suspension, counterweight, transport box with various attachment parts) and module 3 (discharge conveyor) (L x W x H)	15,700 x 2,750 x 3,400 mm
Sea transport	
Packing unit No. 1: module 1 (machine frame, Crawlwe units, engine station, primary conveyor, operator's cabin) (L x W x H)	12,800 x 3,470 x 3,400 mm
Packing unit No. 2: module 2 (slewing ring, conveyor suspension, counterweight, transport box with various attachment parts) (L x W x H)	6,400 x 2,700 x 3,350 mm
Packing unit No. 3: module 3 (discharge conveyor) (L x W x H)	12,300 x 2,300 x 1,700 mm

Weight of base machine	
Empty weight	109,100 kg
Operating weight, CE *2	111,600 kg
Maximum operating weight, full tanks	118,000 kg
Transport weights of individual components	
Ground transport	
Weight of packing unit No. 1: module 1 (machine frame, Crawlwe units, engine station, primary conveyor, operator's cabin)	82,850 kg
Weight of packing unit No. 2: module 2 (slewing ring, conveyor suspension, counterweight, transport box with various attachment parts) and module 3 (discharge conveyor)	28,450 kg
Sea transport	
Weight of packing unit No. 1: module 1 (machine frame, Crawlwe units, engine station, primary conveyor, operator's cabin)	82,850 kg
Weight of packing unit No. 2: module 2 (slewing ring, conveyor suspension, counterweight, transport box with various attachment parts)	23,800 kg
Weight of packing unit No. 3: module 3 (discharge conveyor)	4,650 kg
Weights of operating agents	
Water tank filling in kg	2,800 kg
Diesel tank filling in kg (0.83 kg / l)	1,992 kg
Optional equipment features increasing / reducing empty weight	
Driver	75 kg
On-board tools	30 kg

\*2 – Weight of machine, half-full water tank, half-full fuel tank, driver, on-board tools, excluding equipment options